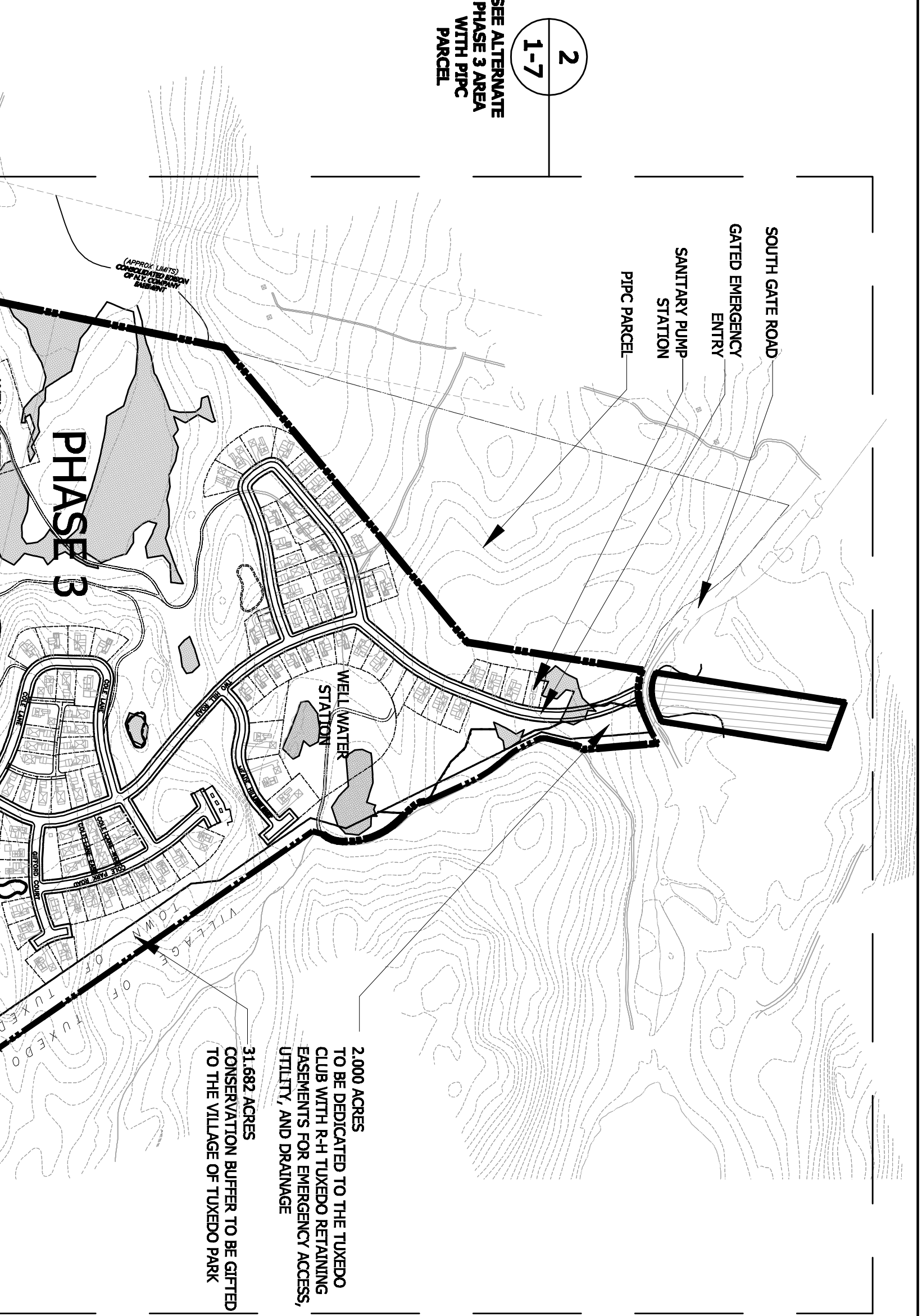


**2**  
Phase 3 With PIPC Parcel  
SCALE: 1"=400'



**2**  
1-7  
SEE ALTERNATE PHASE 3 AREA WITH PIPC PARCEL

Residential Units (not including the PIPC Parcel)

Unit Type	Phase One	Phase Two	Phase Three	Total	% Total
<b>MULTIFAMILY</b>					
CONDOMINIUMS	4	151	21	156	3.8%
TOWNHOMES	0	0	0	0	0.0%
APARTMENTS	3	74	58	135	3.3%
Single-Family					
Single-Family	3	110	17	130	3.2%
CONDOMINIUMS	3	110	17	130	3.2%
APARTMENTS	2	16	8	26	0.6%
Other	0	0	0	0	0.0%
<b>TOTAL SINGLE-FAMILY</b>	<b>341</b>	<b>290</b>	<b>223</b>	<b>754</b>	<b>63.9%</b>
<b>TOTAL PROJECT</b>	<b>380</b>	<b>277</b>	<b>14</b>	<b>431</b>	<b>36.1%</b>
<b>TOTAL PROJECT</b>	<b>721</b>	<b>227</b>	<b>237</b>	<b>1185</b>	<b>100.0%</b>
Other	48	40	30	118	10.0%
Other	309	144	150	603	50.0%
Other	20	0	0	20	1.7%
Other	20	0	0	20	1.7%
Other	731	227	237	1185	100.0%

Residential Units (including the PIPC Parcel)

Unit Type	Phase One	Phase Two	Phase Three	Total	% Total
<b>MULTIFAMILY</b>					
CONDOMINIUMS	4	151	21	176	3.8%
TOWNHOMES	0	0	0	0	0.0%
APARTMENTS	3	74	58	135	3.0%
Single-Family					
Single-Family	3	110	17	130	3.0%
CONDOMINIUMS	3	110	17	130	3.0%
APARTMENTS	2	16	8	26	0.6%
Other	0	0	0	0	0.0%
<b>TOTAL SINGLE-FAMILY</b>	<b>341</b>	<b>290</b>	<b>223</b>	<b>754</b>	<b>63.9%</b>
<b>TOTAL PROJECT</b>	<b>380</b>	<b>277</b>	<b>14</b>	<b>431</b>	<b>36.1%</b>
<b>TOTAL PROJECT</b>	<b>721</b>	<b>227</b>	<b>237</b>	<b>1185</b>	<b>100.0%</b>
Other	48	40	30	118	10.0%
Other	309	144	150	603	50.0%
Other	20	0	0	20	1.7%
Other	20	0	0	20	1.7%
Other	721	227	237	1185	100.0%

NOTE: THE UNIT COUNTS SHOWN IN THIS CHART PREVAIL AS THE PLAN CONFIGURATION OF LOTS MAY BE FURTHER REVISED AT THE TIME OF SUBDIVISION APPLICATION



**1**  
Southern Tract Proposed Site Plan  
SCALE: 1"=400'

TUXEDO RESERVE  
RELATED

No.	Date	Revision
4	11/22/10	ADOPTED NOVEMBER 22, 2010
3	9/7/10	ISSUED TO TOWN BOARD
2	3/13/08	ISSUED TO TOWN BOARD
1	12/09/08	REVISED PER PLANNING BOARD COMMENTS

Southern Tract  
Proposed Site Plan  
Town of Tuxedo, Orange County

Tuxedo Reserve  
Preliminary Plan  
PROJECT NO. 1280730  
SCALE: 1"=400'  
DATE: 08/22/08  
FIGURE NO. 1-7